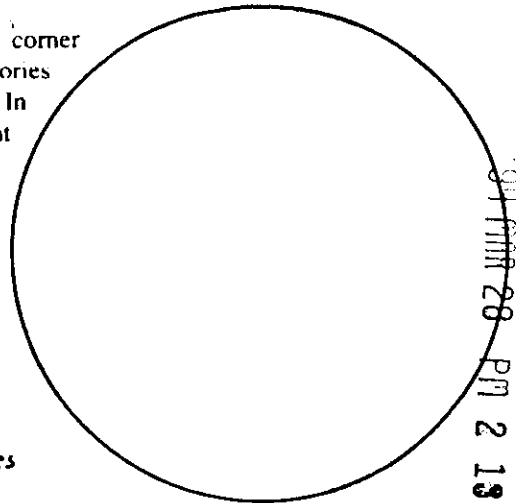


Wyoming Certified Land Corner Recordation Certificate

This form is to be completed in accordance with W.S. 36-11-101, printed in black ink or typed, and shall be for one individual corner.

Describe below, or show in sketch attached to this form, the corner evidence found. Include condition and type of monument, accessories and ties. Describe any maintenance or rehabilitation performed. In the circle to the right, show monument inscription. If monument is determined lost or obliterated, restate the GLO or BLM original field note record; describe or show the procedure used to reestablish the corner and all data as above for a found monument.



138973
 RECORDED
 LARAMIE COUNTY
 CHEYENNE, WY.

Field Date 14 JUN 90 Office Reference 2121

EVIDENCE FOUND: Found a white corner stone with 1/4 chiseled on the west side. The stone measures 8" x 6" x 6" exposed. Also found a 1" iron pipe 0.7' north of corner stone.

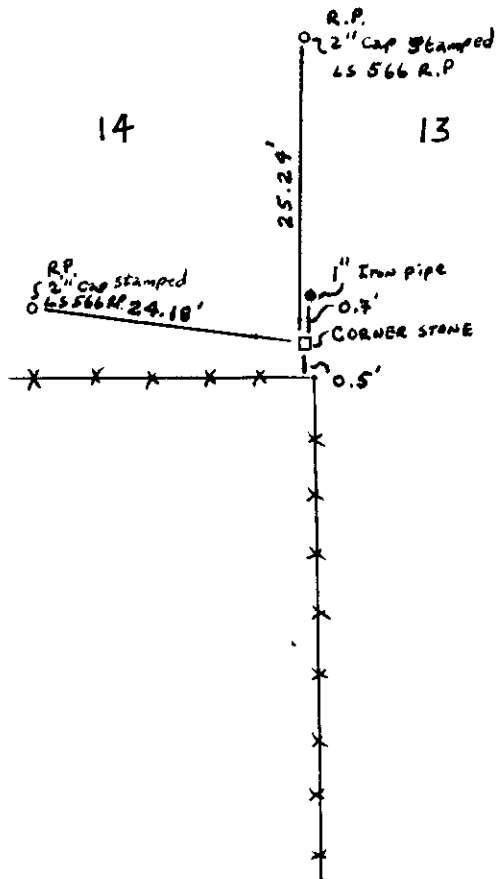
GLO RECORD: Granite Boulder, measures 16" x 9" x 7".

MONUMENT SET: None

REFERENCE POINTS SET: set 2 5/8" x 24" rebar with 2" caps stamped LS 566 R.P. (see sketch)

Monument Inscription

LOCATION SKETCH



State of Wyoming

Office of County Clerk

County of _____

This Certified Land Corner Recordation Certificate was filed for record on the _____ day of _____, 19 ____, in Book No. T 13N, R 68W, on Alpha-Numeric coordinates L 21 and was noted on the Cross Index Plat.

County Clerk

Corner Type:

Aliquot Corner Other

Section(s) 14 | 13

Meridian 6th

Corner Name: 1/4 Corner Township T13N

Range R68W Page _____

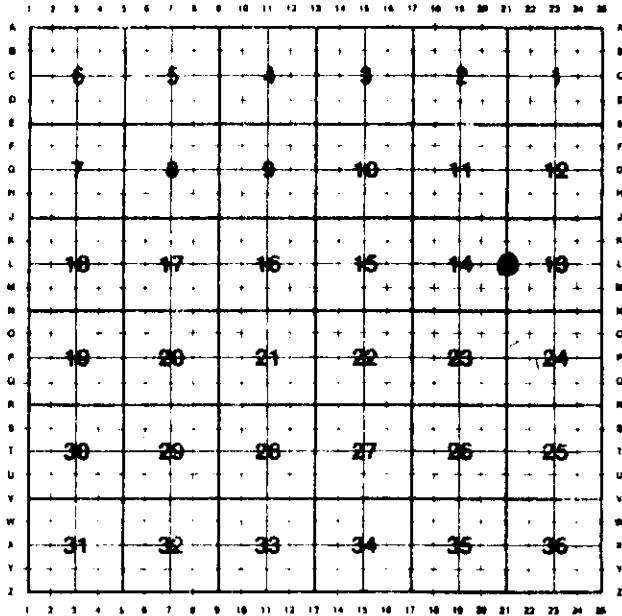
Sheet 1 of 1

**Directions for using the
Cross Index Plat**

Section, quarter and sixteenth corners will be marked with a dot at the corner location. The alpha-numeric coordinate number is then determined for the intersection of the two lines. A corner that applies to two or more townships shall be filed under all that apply by the use of photo copies.

Closing corners will be indexed under the township in which they control ownership. For 1/64, 1/256, 1/1024 and non-aliquot corners lying between grid designations, mark the appropriate grid area with a dot and use the index code to the north and west (local systems may be used if the method is approved by the County Surveyor or Clerk and a written description of its use is filed in the front of each book of certificates).

Cross Index Plat



State Plane Coordinates (optional)

Zone W WC EC E feet/meters

NAD 1927 NGVD 1929 NAD 1983 NAVD 1988

North (Y) = _____ East (X) = _____ EL = _____

Latitude _____ Longitude _____

Scale Factor _____ Geoid Height _____

Certification

I, William D. Braman, Wyoming PLS-# 566 certify that I, or others under my supervision, have performed the work as described above and completed this form.

Company or Agency INTERMOUNTAIN PROFESSIONAL SERVICES, INC.

Mailing Address 1816 CENTRAL AVENUE

Street Address _____

City, State, ZIP CHEYENNE, WYOMING 82001

Telephone, FAX PH. 307-632-3138 FAX 307-632-3194

Sheet _____ of _____

